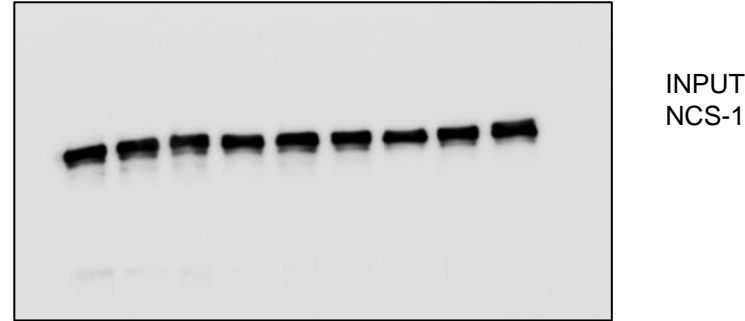
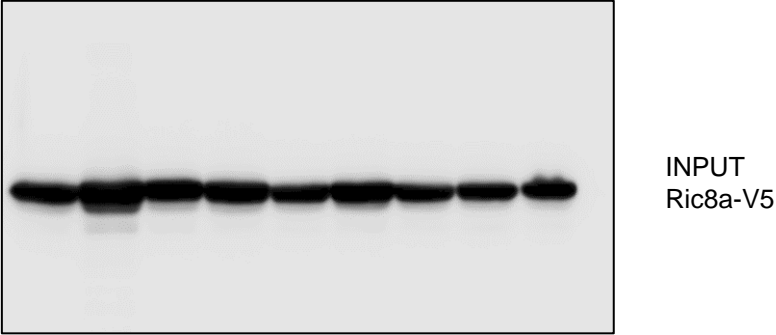
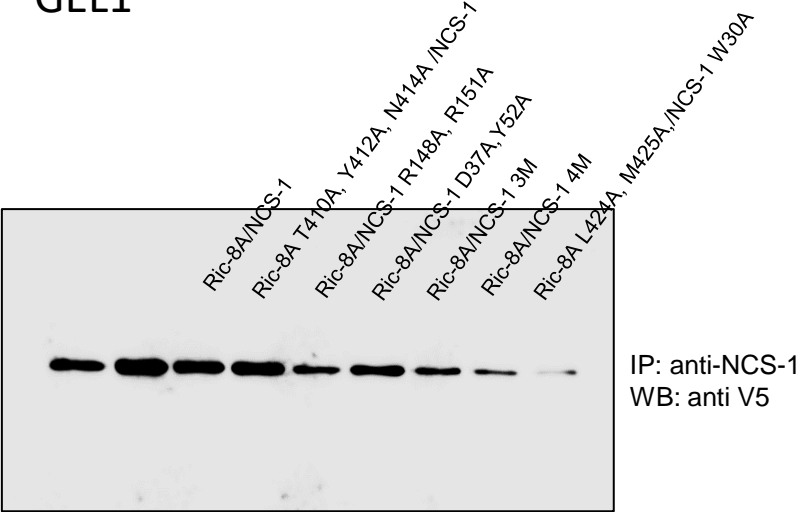
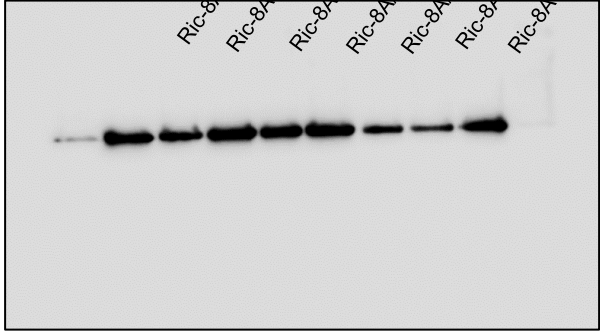


GEL1

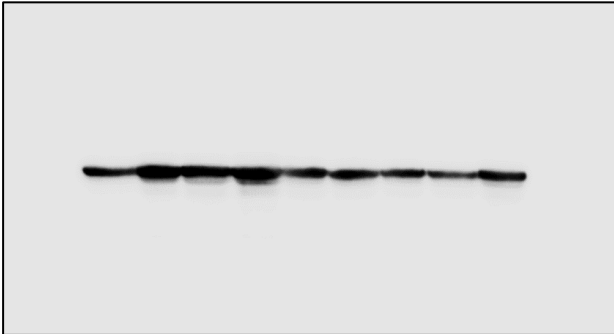


GEL2

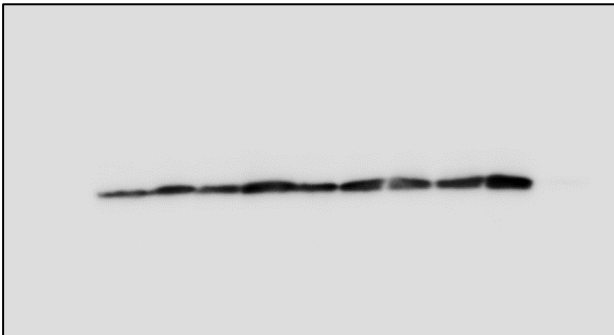
Ric-8A/NCS-1
Ric-8A T410A, Y412A, N414A /NCS-1
Ric-8A/NCS-1 R148A, R151A
Ric-8A/NCS-1 D37A, Y52A
Ric-8A/NCS-1 3M
Ric-8A/NCS-1 4M
Ric-8A L424A, M425A/NCS-1 W30A



IP: anti-NCS-1
WB: anti V5



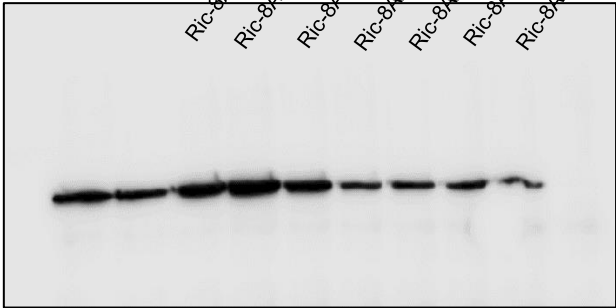
INPUT
Ric8a-V5



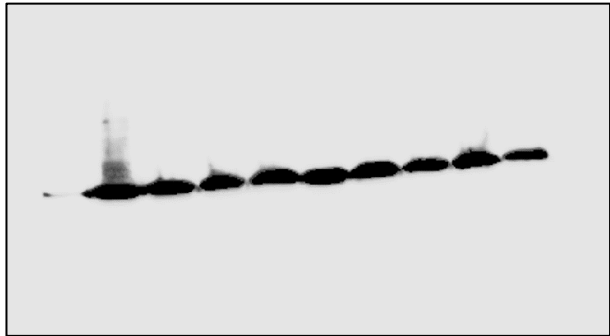
INPUT
NCS-1

GEL3

Ric-8A/NCS-1
Ric-8A T410A, Y412A, N414A /NCS-1
Ric-8A/NCS-1 R148A, R151A
Ric-8A/NCS-1 D37A, Y52A
Ric-8A/NCS-1 3M
Ric-8A/NCS-1 4M
Ric-8A L424A, M425A/NCS-1 W30A



IP: anti-NCS-1
WB: anti V5



INPUT
Ric8a-V5



INPUT
NCS-1